

THE LISNAVAGH BOTHY 2019

The Bothy is a small cottage full of character in the Walled Garden at Lisnavagh. It is very close to the house and therefore useful for a family who is part of the group staying in Lisnavagh House.

The Bothy is a very special place and because it is in the Walled Garden we ask guests to be mindful of their surroundings.

It is more suitable to a family stay and we ask for no late night parties in this area..

There are lovely walks at Lisnavagh as well as local pursuits such the Wicklow Way, golfing, riding and garden visits.

The Bothy has an extensive outside area for children to play or for sitting out in the summertime and is fully equipped as self-catering accommodation.

The Bothy sleeps 4/5 – ideally a family with two or three young children
2 bedrooms (1 double 1 bunk bed (double bottom bunk))
Sitting room with wood burning stove
Fully equipped kitchen
One bathroom (with bath & shower)
Garden

Cots & Highchairs provided if required.

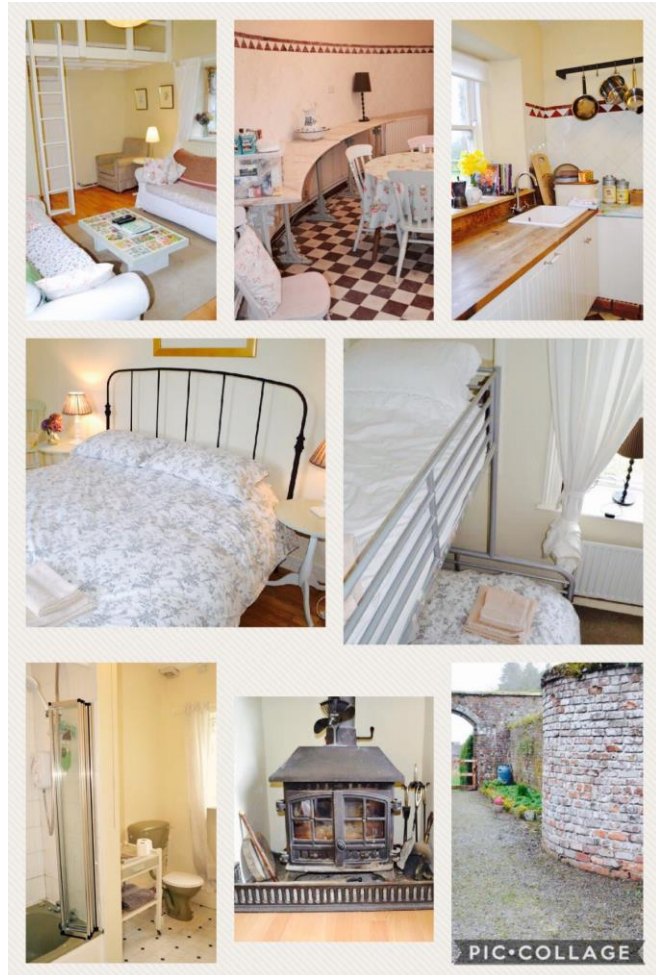
Bed linen, towels & soap and firewood are provided including a welcome pack with basic needs such as milk, tea & coffee, bread, eggs, sugar, butter & jam, cereal.

Price Guide

€390.00 2 night stay

€450.00 for a 3 night stay

To confirm your booking we ask for full payment in advance please. We accept credit cards, cheques (made payable to



Lisnavagh Farm Partnership) and bank transfers.

To make a reservation please contact the office T. 0599161473 or email events@lisnavagh.com